



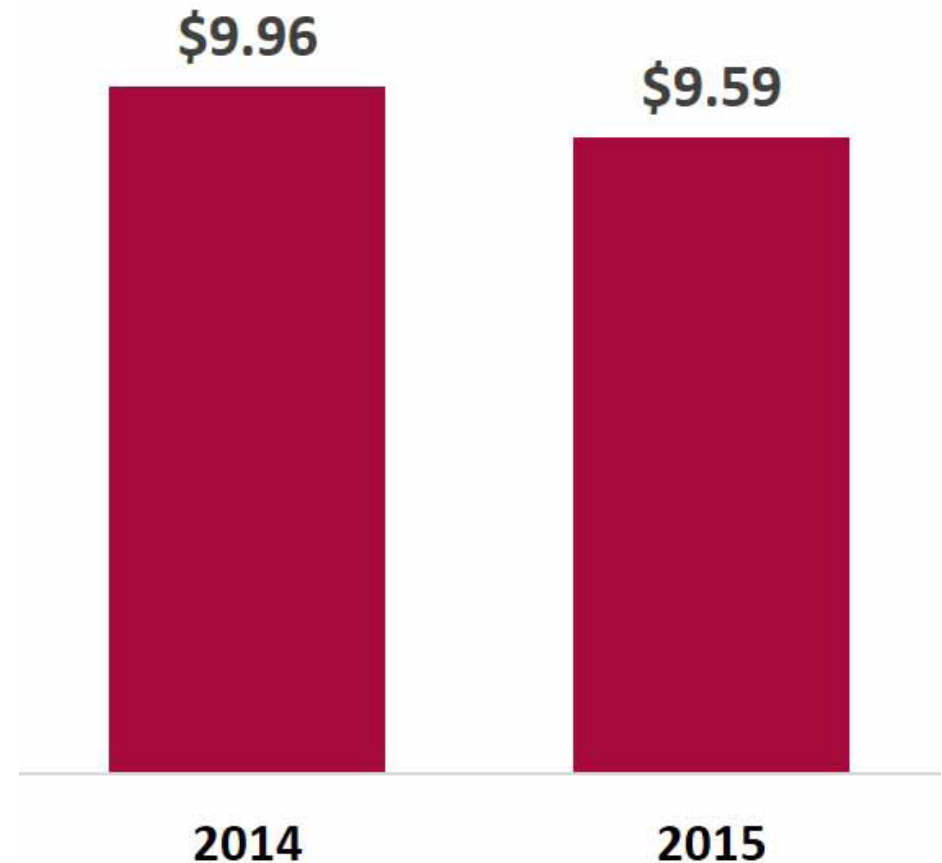
# RUSD REFERENDUM

## School Maintenance Needs

### The referendum would address needs at all schools:

- The following lists reflect current deferred school maintenance needs and known future needs
- Items on these lists and more will be addressed during the 15 years of the referendum
- A Facilities Advisory Council will provide yearly reviews and prioritized recommendations to the Board of Education
- We can address these needs while holding the line on taxes

### School Property Tax Decrease With \$8.5 Million Referendum



# Impact on High Schools

## Case

- New fire detection system
- New roof
- New electrical system
- Modernized elevator
- New classroom ventilation
- New floor tiles or carpet where needed
- New classroom ceilings where needed
- New walk-in coolers and freezers for food service kitchen
- Paved path to athletic field for ADA compliance
- Accessibility upgrades to press box area
- New swimming pool and ventilation system
- New field house floor and bleachers
- Resurfaced and upgraded track
- New fire detection system for concession stand
- New field lighting
- New lockers for PE and athletic locker rooms
- Repainted lockers
- New auditorium lighting and stage equipment



# Impact on High Schools

## Horlick

- New clock and intercom system
- New roof
- New electrical systems
- New fire detection system
- New heating system - boilers, pipes, thermostats, classroom ventilation
- New floor tiles or carpet where needed
- Modernized restroom including new fixtures
- New fieldhouse floor and bleachers
- New auditorium lighting and stage equipment
- Resurfaced track
- Improved ADA accommodations
- New walk-in coolers and freezers for food service kitchen
- Improved athletic field
- New lockers for PE and athletic locker rooms



# Impact on High Schools

## Park

- New clock and intercom system
- New fire alarm system
- New electrical systems
- New roof
- Exterior brick repair/tuck pointing
- Modernized elevator
- New heating systems - boilers, pipes, thermostats, classroom ventilation
- New paint throughout school
- New floor tiles or carpets where needed
- New classroom ceilings where needed
- New plumbing
- New walk-in coolers and freezers for food service kitchen
- Resurfaced and repaired outdoor track
- New lockers for PE and athletic locker rooms
- New auditorium lighting and stage equipment



# Impact on Elementary Schools

## Bull Fine Arts

- New heating system - boilers, pipes, thermostats, classroom ventilation
- New classroom ceilings
- New paint throughout the school
- New floor tiles or carpet where needed
- New elevator - ADA compliance
- New restroom fixtures
- New building plumbing
- New roof
- New electrical systems

## Dr. Jones

- New roof
- New doors and windows
- Improved fire detection system
- New electrical systems
- New classroom heating ventilators
- New paint throughout the school
- New floor tiles or carpet where needed

## Fratt

- Improved fire detection system
- Additional ADA compliance features
- New heating system - boilers, pipes, thermostats, classroom ventilation
- New restroom features
- New roof
- New electrical systems



# Impact on Elementary Schools

## Giese

- Improved fire detection system
- New roof
- New doors and windows
- New electrical systems
- New heating system - boilers, pipes, thermostats, classroom ventilation
- New paint throughout school
- New floor tiles or carpet where needed
- New restroom fixtures
- New parking lot surfaces, sidewalks and landscaping
- New secure entrance



## Gifford

- Recommended addition of elementary classroom spaces to create K-8 school
- New doors and windows
- Auditorium lighting and stage upgrades
- New paint throughout the school
- New floor tiles or carpet where needed
- New classroom ceilings where needed
- New roof
- New secure entrance
- Paint lockers



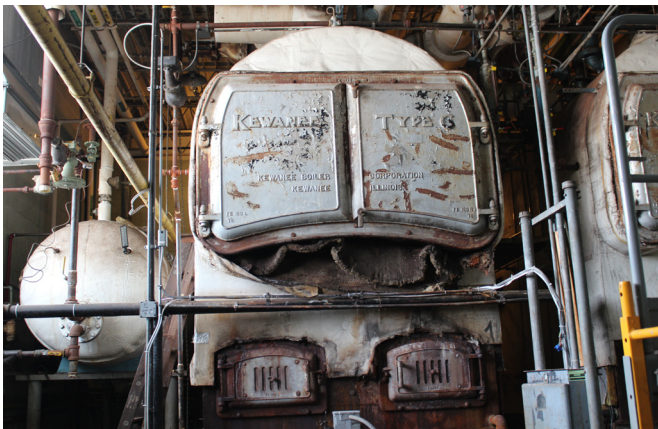
## Goodland

- New electrical systems
- Improved fire detection system
- New paint throughout the school
- New floor tiles or carpet where needed
- New classroom ceilings where needed
- New roofing
- New playground equipment
- New secure entrance

# Impact on Elementary Schools

## Jerstad-Agerholm

- Exterior brick repair/tuck pointing
- New electrical systems (shared with Jerstad-Agerholm Middle School)
- New heating system - boilers, pipes, thermostats, classroom ventilation (shared with Jerstad-Agerholm Middle School)
- New paint throughout the school
- New floor tiles or carpet where needed
- New classroom ceilings where needed
- New restroom fixtures
- New roof
- New auditorium curtains and lighting
- New secure lighting



## Jefferson Lighthouse

- New elevator - ADA compliance
- New paint throughout school
- New floor tiles or carpet where needed
- New classroom ceilings where needed
- New restroom fixtures
- New roof
- New fencing
- New parking lot surface
- New secure entrance



## Janes

- New fire detection system
- New electrical systems
- New heating system - boilers, pipes, thermostats, classroom ventilation
- New paint throughout the school
- New floor tiles or carpet where needed
- New classroom ceilings where needed
- New restroom fixtures
- New playground surface
- New secure entrance



# Impact on Elementary Schools

## S.C. Johnson

- New roof
- New paint throughout school
- New floor tiles or carpet where needed
- New classroom ceilings where needed
- New/repared parking lot and playground surface
- New doors
- New security entrance

## Julian Thomas Mitchell

- New paint throughout the school
- New floor tiles or carpet where needed
- New classroom ceilings where needed
- New roof
- New high efficiency hot water heat system components
- New secure entrance



## Mitchell

- New heating system - boilers, pipes, thermostats, classroom ventilation (shared with Mitchell Middle School)
- New roofing
- New playground equipment

## Knapp

- Proposed new building on current site (students will remain in existing building during construction)





# Impact on Elementary Schools

## North Park

- New doors and windows
- New classroom ventilation
- New paint throughout school
- New floor tiles or carpet where needed
- New restroom fixtures
- New roof
- New secure entrance



## Olympia Brown

- Proposed new building on 5 1/2 Mile Road site (students remain in existing building during construction)



## Racine Early Education Center

- New floor tiles or carpet where needed
- New paint where needed
- ADA compliance improvements
- New fire alarm
- New boiler, piping and classroom ventilation

# Impact on Elementary Schools

## Red Apple

- New elevator - ADA compliance
- New boiler, piping and classroom ventilation
- New paint throughout school
- New floor tiles where needed
- New classroom ceilings where needed
- New roof
- Brick repair/tuck pointing
- Repainted lockers



## Roosevelt

- New gym windows
- New electrical systems
- New elevator and accommodations - ADA compliance
- New heating system - boilers, pipes, thermostats, classroom ventilation
- New paint throughout school
- New floor tiles or carpet where needed
- New classroom ceilings where needed
- Modernized restrooms including new fixtures
- New secure entrance
- New fencing



## Schulte

- New windows and doors
- New fire detection system
- New electrical systems
- New paint throughout school
- New floor tiles or carpet where needed
- New classroom ceilings where needed

# Impact on Elementary Schools

## Wadewitz

- New windows and doors
- New electrical systems
- New paint throughout school
- New floor tiles or carpet where needed
- New classroom ceilings where needed
- New staff parking lot and drive surface
- Brick repair/tuck pointing
- New fire alarm detection
- New secure entrance



## West Ridge

- New boilers, classroom ventilation and thermostat controls
- New paint throughout school
- New floor tiles or carpet where needed
- New classroom ceilings where needed
- New restroom fixtures
- New roof



## RCLA

- New fire detection system
- New heating system - boilers, pipes, thermostats, classroom ventilation

# Impact on Middle Schools

## Gilmore

- New electrical systems
- Modernized elevator
- New floor tiles or carpet where needed
- New classroom ceilings where needed
- New restroom fixtures
- New auditorium lighting, stage equipment and curtains
- New roof
- New high efficiency hot water heat system components
- Improved athletic field

## Jerstad-Agerholm

- Exterior brick repair/tuck pointing
- New electrical systems (shared with Jerstad-Agerholm Elementary School)
- New heating system - boilers, pipes, thermostat, classroom ventilation (shared with Jerstad-Agerholm Elementary School)
- New paint throughout school
- New floor tiles or carpet where needed
- New classroom ceilings where needed
- New restroom fixtures
- New roof
- New tennis courts
- Repainted lockers

## Mitchell

- New heating system - boilers, pipes, thermostats, classroom ventilation (shared with Mitchell Elementary School)
- New roofing
- New auditorium seating and stage equipment
- New paint where needed
- New floor tiles or carpet where needed
- New classroom ceilings where needed
- New fencing

## McKinley

- New roofing
- New elevator - ADA compliance
- Electrical system improvements
- New fire alarm detection
- New stage equipment

## Starbuck

- Upgraded heating and cooling systems



# Impact on Middle/High Schools

## Walden III School

- Exterior brick repair/tuck pointing
- New electrical systems
- New heating system - boilers, pipes, thermostats, classroom ventilation
- New paint where needed
- New floor tiles or carpet where needed
- New classroom ceilings where needed
- Parking lot repairs
- New plumbing and new restroom fixtures
- New roof



## REAL School

- Proposed new location, upon completion of recommended Olympia Brown construction
- New location TBD with input from REAL School families and Facilities Advisory Council

